

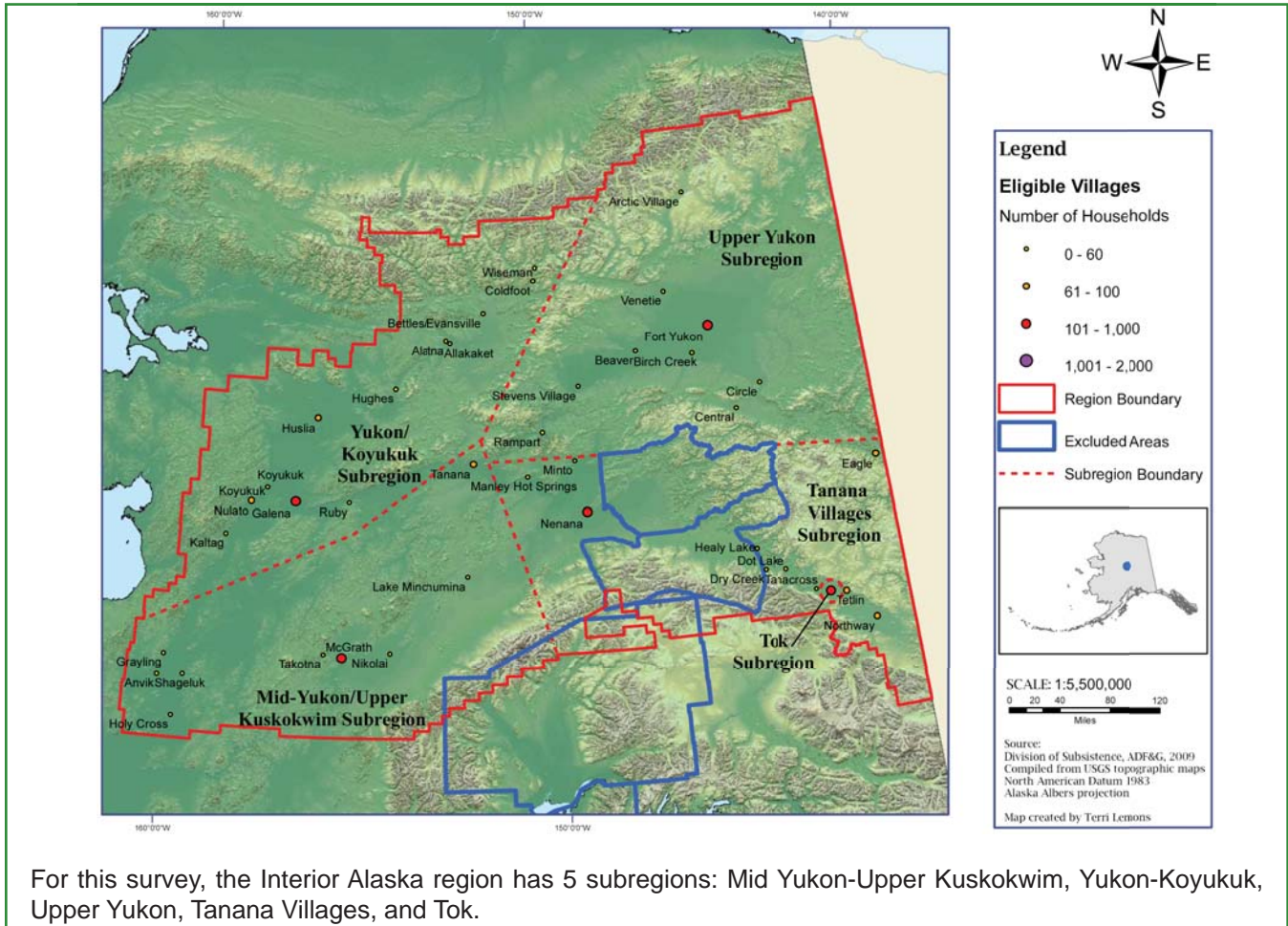


Alaska Migratory Bird Co-Management Council (AMBCC)

Subsistence Birds Harvest Survey

# Interior Alaska Region

April 2011



## Alaska Migratory Bird Co-Management Council

The AMBCC was created in 2000 so that Alaska Native people have a meaningful role in the conservation and management of birds.

Since 2004, the AMBCC has conducted yearly subsistence harvest surveys of birds and their eggs in Alaska, rotating regions and villages.

Harvest data collection relies on collaboration among Alaska Native organizations, tribal councils, local surveyors, the U.S. Fish & Wildlife Service, and the Alaska Department of Fish and Game.

## ***If you are contacted by a surveyor, please complete the survey so that:***

- *there is a better **understanding** of the birds important for your region and culture;*
- *the subsistence harvest regulations are based on **correct information**;*
- *the subsistence **harvest of birds** will continue for you and your children.*

## Estimated Harvest of Birds



- a. Regional harvest estimates are not available.
- b. No survey.

In 2004 and 2006, on average, the subsistence harvest in the **Interior Alaska** region was **44,031 birds per year** or 11.5% of the yearly statewide harvest of birds.

The Tanana Villages and the Upper Yukon subregions together accounted for 68%-76% of the yearly bird harvest. The Yukon-Koyukuk and Mid Yukon-Upper Kuskokwim subregions together accounted for 8%-11% of the yearly harvest. In 2006, the Tok subregion accounted for 17% of the yearly harvest.

On average, spring harvest accounted for 63% of the regional harvest, summer harvest accounted for 5.5%, and fall harvest accounted for 32%.

### Survey Seasons

Spring (1 Apr – 30 Jun)

Summer (1 Jul – 31 Aug)

Fall (1 Sep – 31 Oct)

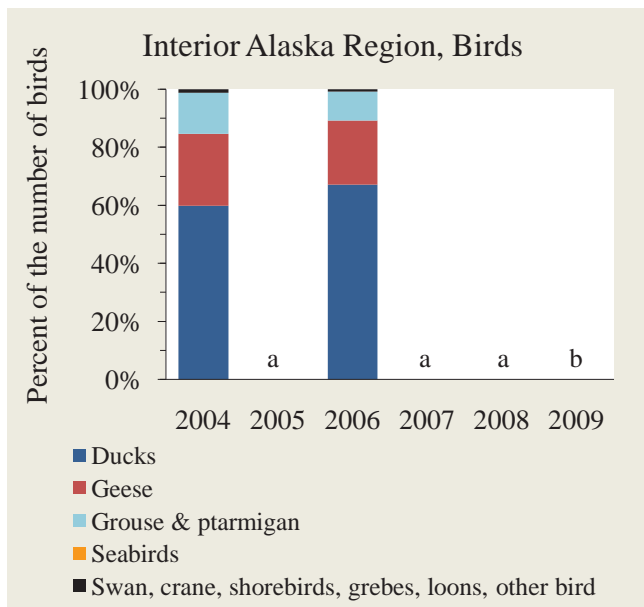
## Estimated Harvest of Birds per Person

	2004	2005	2006	2007	2008	2009
Interior Alaska Region	6.5	a	5.0	a	a	b
Mid Yukon–Upper Kuskokwim	2.1	2.0	0.5	b	b	b
Yukon–Koyukuk	1.5	0.5	0.9	1.6	3.7	b
Upper Yukon	10.2	b	8.0	13.4	b	b
Tanana Villages	13.4	b	11.8	b	b	b
Tok	b	b	4.8	b	b	b

a. Regional harvest estimates are not available.

b. No survey.

## Composition of the Subsistence Harvest of Birds



a. Regional harvest estimates are not available.

b. No survey.



Mallard (c), northern pintail (d), and American wigeon (e) were the ducks usually harvested in the largest numbers in most subregions, except in the Upper Yukon subregion where white-winged scoter (f) was the duck harvested in the largest numbers.

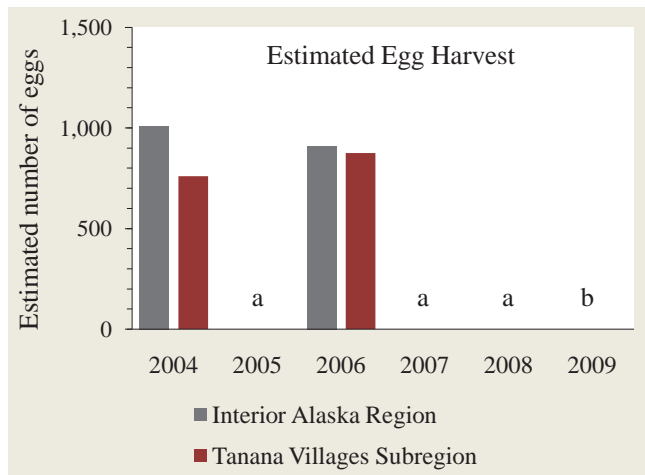


The survey does not specifically ask about the 3 species of grouse (a) that occur in Interior Alaska. Grouse were harvested in the largest numbers in the Tanana Villages subregion (up to 18.5% of the yearly harvest). Across the region, ptarmigan (b) were harvested in considerably lower numbers compared to grouse.



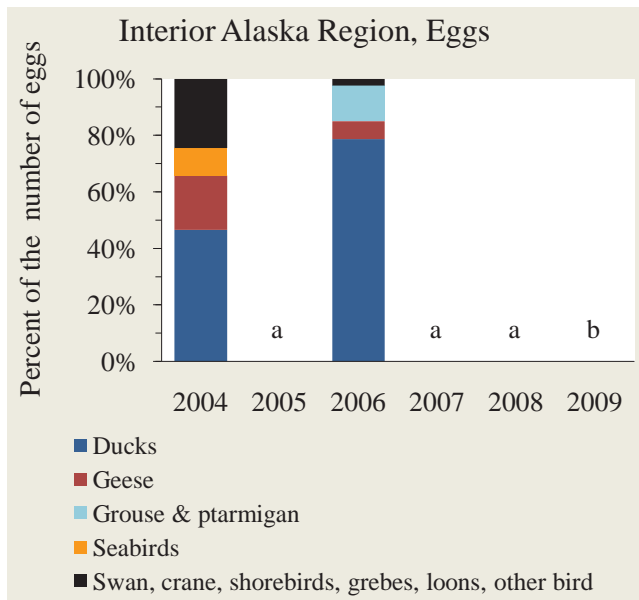
Lesser Canada goose (g) and white-fronted goose (h) were the geese usually harvested in the largest numbers in all 5 Interior Alaska subregions.

## Estimated Total Harvest of Eggs



- a. Regional harvest estimates are not available.
- b. No survey.

## Composition of the Egg Harvest



At the regional level, although eggs of a diversity of species were harvested, eggs of mallard (c), northern pintail (d), northern shoveler (i), and lesser Canada goose (g) were the eggs harvested in the largest numbers. The species composition of the egg harvest represents mainly the Tanana Villages subregion, where most egg harvest occurred.



## Available Reports

Naves, L.C. 2010. Alaska migratory bird subsistence harvest estimates, **2004–2007**, Alaska Migratory Bird Co-Management Council. Alaska Department of Fish and Game Division of Subsistence, Technical Paper No. 349, Anchorage. <http://www.subsistence.adfg.state.ak.us/techpap/TP349.pdf>

Naves, L.C. 2010. Alaska migratory bird subsistence harvest estimates, **2008**, Alaska Migratory Bird Co-Management Council. Alaska Department of Fish and Game Division of Subsistence, Technical Paper No. 353, Anchorage. <http://www.subsistence.adfg.state.ak.us/techpap/TP353.pdf>

Naves, L.C. *In prep.* Alaska migratory bird subsistence harvest estimates, **2009**, Alaska Migratory Bird Co-Management Council. Alaska Department of Fish and Game Division of Subsistence, Technical Paper No. NNN, Anchorage.

**AMBCC website:** <http://alaska.fws.gov/ambcc/index.htm>

### AMBCC Program

*Donna Dewhurst*  
USFWS Migratory Bird Management  
1011 E. Tudor Rd. MS 201  
Anchorage, AK 99503  
phone (907) 786-3499

### ADF&G Division of Subsistence

*Liliana Naves*  
333 Raspberry Rd.  
Anchorage, AK 99518  
phone (907) 267-2302

For the ADF&G notice of nondiscrimination, please visit <http://www.adfg.state.ak.us/oeostate.php>